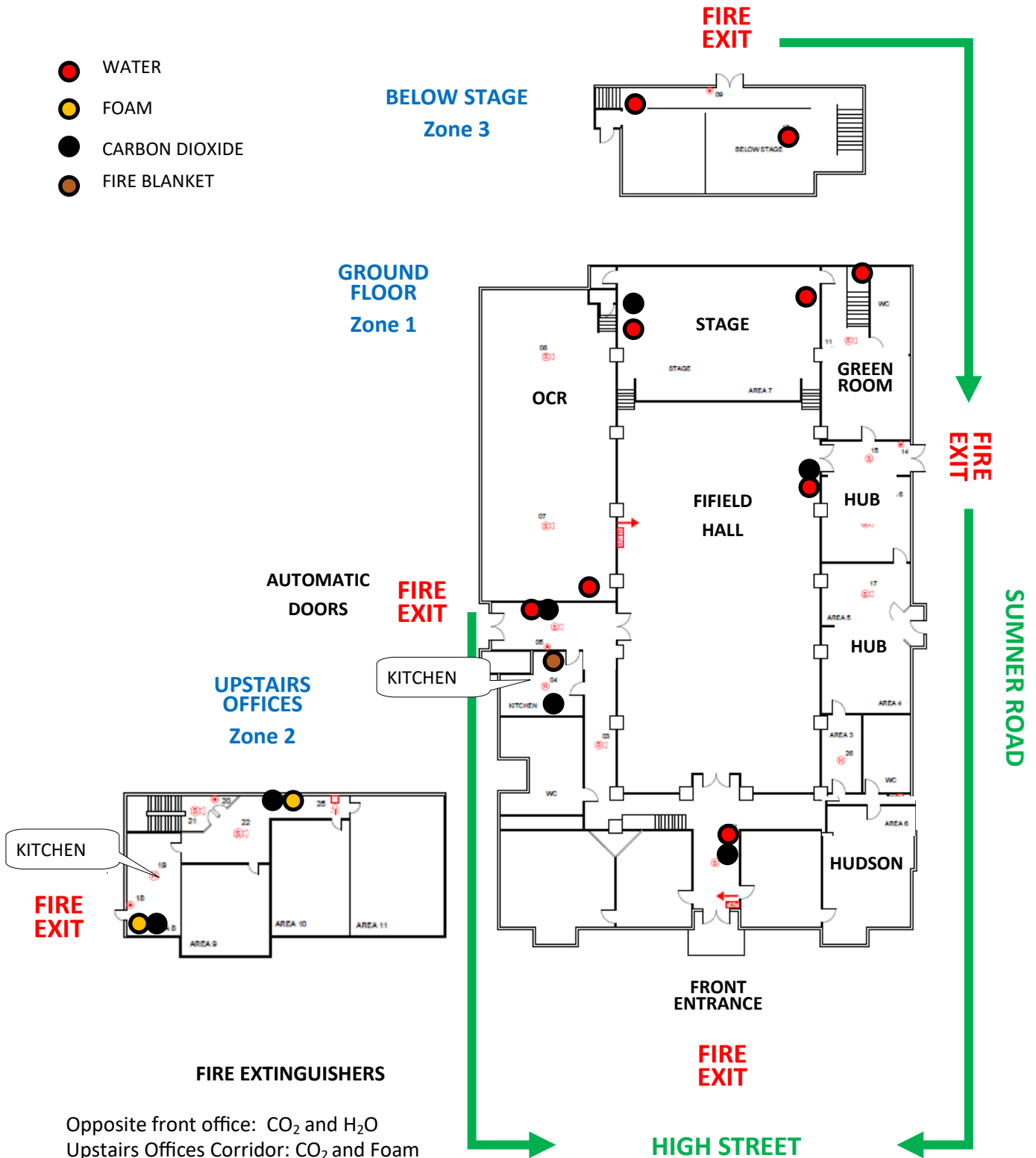


# COLESHILL TOWN HALL MAP OF FIRE EXITS, ASSEMBLY POINT AND FIRE FIGHTING EQUIPMENT

- WATER
- FOAM
- CARBON DIOXIDE
- FIRE BLANKET



## FIRE EXTINGUISHERS

- Opposite front office: CO<sub>2</sub> and H<sub>2</sub>O
- Upstairs Offices Corridor: CO<sub>2</sub> and Foam
- Upstairs Offices Kitchen: CO<sub>2</sub> and Foam
- Downstairs Main Kitchen: CO<sub>2</sub> & Fire Blanket
- Outside OCR: CO<sub>2</sub> and H<sub>2</sub>O
- Inside OCR: H<sub>2</sub>O
- Below OCR Small Store: H<sub>2</sub>O
- Stage Left: CO<sub>2</sub> and H<sub>2</sub>O
- Big Store below stage: H<sub>2</sub>O
- Below Stage back of Green Room: H<sub>2</sub>O
- Stage Right: H<sub>2</sub>O
- Fifield Hall: CO<sub>2</sub> and H<sub>2</sub>O

